



PROPERTY DESCRIPTION

This property sits 209 feet above sea level with spectacular unobstructed views of the Atlantic Ocean. It is suitable for an exclusive low density home development or higher density residential project. At one point it enjoyed preliminary project approval for two(2) six-story residential buildings comprising 72 apartment units, but the permits have since expired.

Isabela is well known for its beaches and as a surfing destination. One of its main industries is tourism and it is conveniently located within just a few miles of Aguadilla's international airport which recently became Lufthansa Airlines' newest aviation maintenance and overhaul facility.

LAND AREA

9,662.79 Sq. Mt.
(2.46 cuerdas)

TAX ID. NUMBER

002-069-003-96-000
002-069-003-02-000
002-069-003-95-000

GPS COORDINATES

Lat. 18.50823565
Lon. -67.07362944

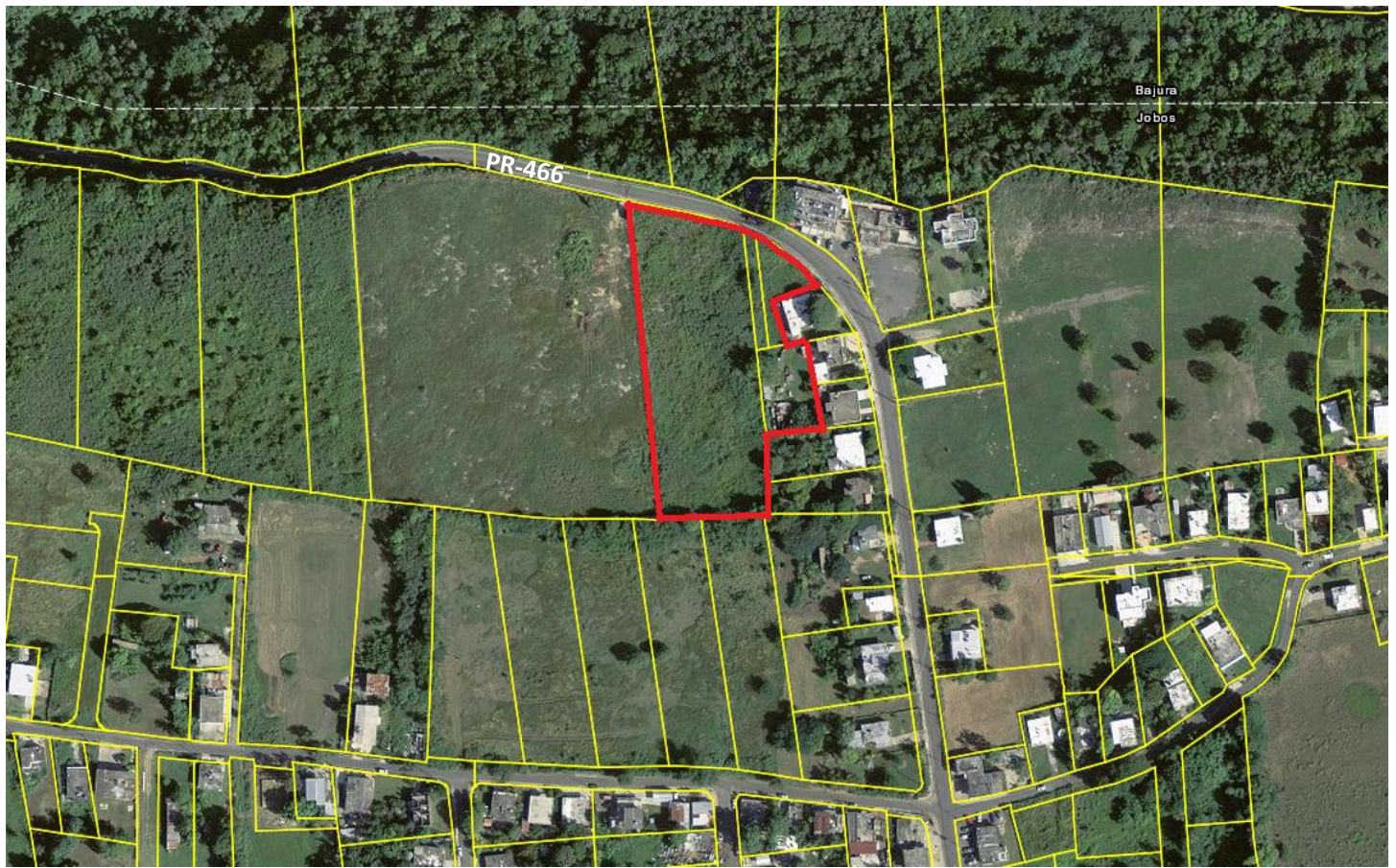
SALES PRICE

\$367,000.00



AMG, INC. * P.O. BOX 191117 * SAN JUAN, PUERTO RICO 00919-1117
CONTACT: RAFAEL PORTELA 787.753.1212 www.amgipr.com

CADASTRAL PLAN



OCEAN VIEW



STREET VIEW PR-466

