

\$2,600,000

OR BEST OFFER

For
SALE

Ideal for Residential Assisted Living or Elderly Development

PROPERTY

11,981 Square Meter Lot
Level Topography

LOCATION

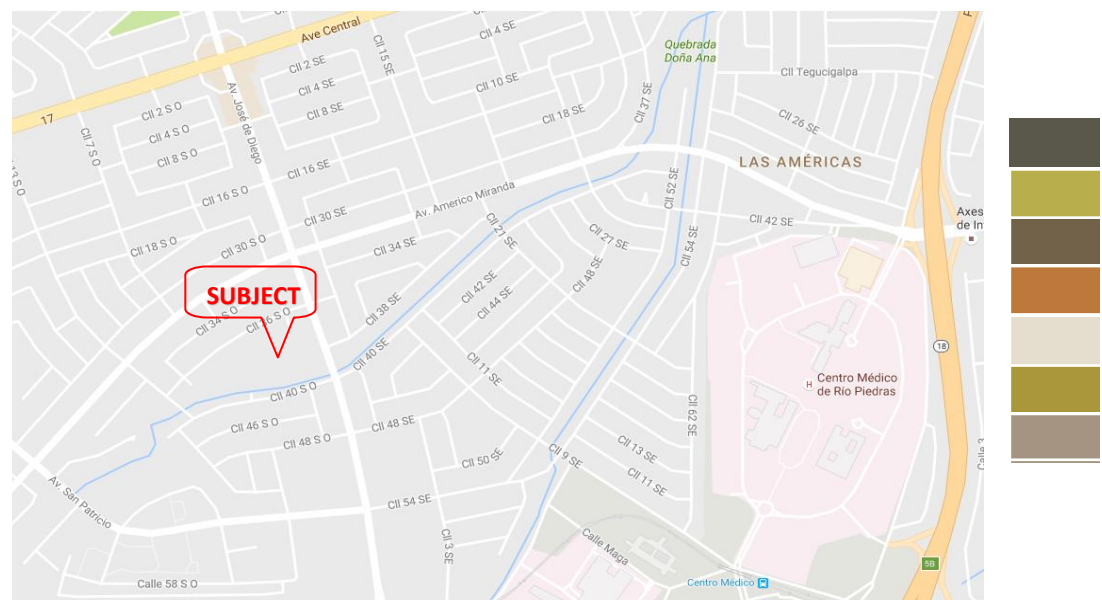
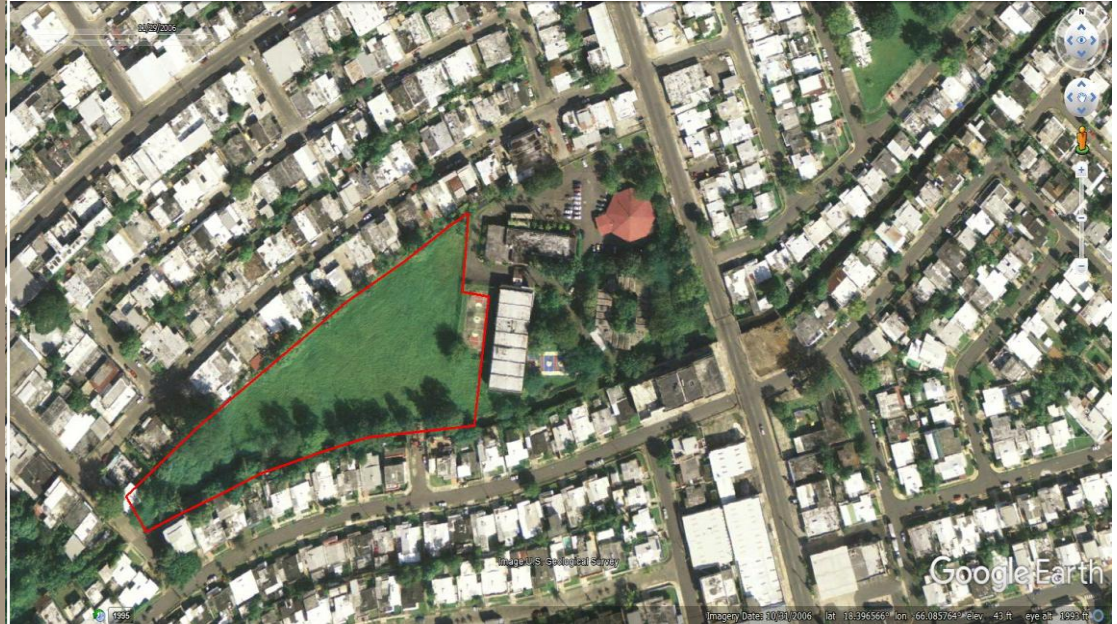
930 De Diego Avenue
Urb. La Riviera
Rio Piedras, P.R.

Adjacent to Santa María
de los Angeles Parish with
access through 11 SW and
40 SW Streets

GPS COORDINATES

Lat. 18.396390

Lon. -66.086779



Adjacent to Santa María de los Angeles Parish
RIO PIEDRAS, PUERTO RICO



AMG, Inc.
P. O. Box 191117
San Juan, Puerto Rico 00919-1117

Contact: Rafael Portela
Tel. 787.753.1212

www.amgipr.com

Neighborhood: The surrounding neighborhood is comprised primarily of single detached residential developments including La Riviera, Caparra Terrace and Reparto Metropolitano with commercial activity on José De Diego Avenue. Hospital Metropolitano and Centro Médico are less than 2 miles away.

Access: Subject property is readily accessible through De Diego Avenue which connects with Jesus T. Piñero Avenue and State Road PR-21. Both access routes connect with Las Americas Expressway (PR-18) and Martinez Nadal Expressway (PR-20), major thoroughfares with access to all parts of the Island.